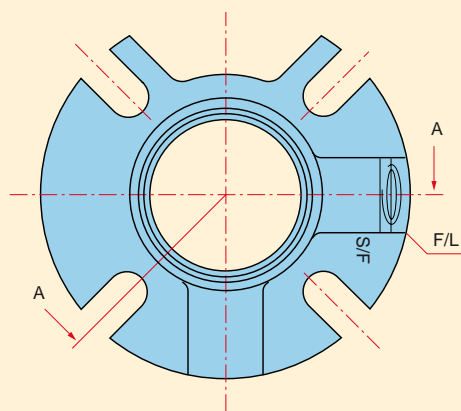
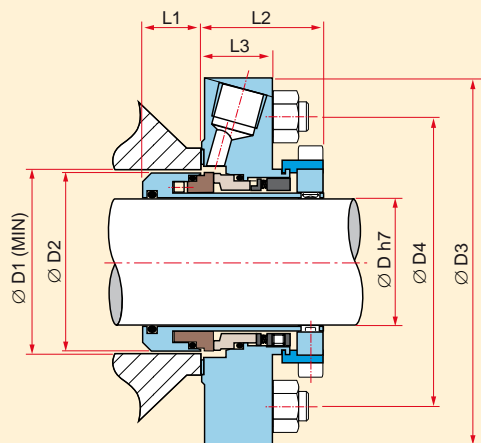


POWER[®] seal C 10



Ø hřídele D	Ucpávková komora D1				D2	D3	L1	L2	L3	W	Rozteč šroubů a jejich velikost D4												
	Inch	mm	Min.	Max.							3/8"	M10	1/2"	M1 2	5/8"								
1.000	25	1.625	41.5	1.875	48	1.551	39.4	3.740	95	0.654	16.6	1.669	42.4	0.984	25	0.437	11.1	2.625	70				
1.125	28	1.750	44.5	2.000	51	1.696	43.1	3.858	98	0.693	17.6	1.669	42.4	0.984	25	0.437	11.1	2.875	73				
	30		46		54		44.2		98		16.6		42.4		25				76				
1.250	32	1.875	48	2.215	54	1.811	46	4.252	108	0.693	17.6	1.669	42.4	0.984	25	0.437	11.1	3.000	76				
1.375	35	2.000	51	2.350	58	1.937	49.2	4.252	108	0.693	17.6	1.669	42.4	0.984	25	0.437	11.1	3.250	80				
1.500	38	2.250	58	2.500	63	2.185	55.5	4.724	120	0.787	20	1.669	42.4	0.984	25	0.563	14.3	3.375	86	3.500	90		
	40		60		66		57.4		120		20		42.4		25				89		92		
1.625		2.375		2.625		2.311	58.7	4.724		0.787	20	1.696	42.4	0.984	25	0.563		3.500		3.625			
	42		62		68				120		20	1.696	42.4	0.984	25	14.3			90		92		
1.750	45	2.500	64	2.750	70	2.421	61.5	5.000	127	0.807	20.5	1.696	42.4	0.984	25	0.563	14.3	3.625	93	3.750	96		
1.875	48	2.625	67	2.875	73	2.551	64.8	5.118	130	0.807	20.5	1.787	45.4	0.984	25	0.563	14.3	3.750	95	3.875	98		
2.000	50	2.750	70	3.000	77	2.677	68	5.118	130	0.807	20.5		48.9	0.984	25	0.563	14.3	3.875	98	4.000	102		
2.125		2.875		3.125		2.795	71	5.906		0.807	20.5	1.925	48.9	0.984	25	0.689		4.125		4.250		4.375	
	55		75		82		72		150		20.5	2.039	51.8		28.5	17.5			105		108		112
2.250		3.000		3.250		2.937	74.6	6.260		0.807	20.5	2.039	51.8	1.122	28.5	0.689		4.250		4.375		4.500	
2.375	60	3.250	83	3.500	90	3.122	79.3	6.378	162	0.807	20.5	2.039	51.8	1.220	31	0.689	17.5	4.375	112	4.500	115	4.625	118
2.500	63	3.375	86	3.625	92	3.311	82.5	6.456	164	0.807	20.5	2.039	51.8	1.220	31	0.689	17.5	4.500	115	4.625	118	4.750	121
2.625	65	3.500	90	3.750	95	3.437	85.7	7.008	178	0.807	20.5	2.039	51.8	1.220	31	0.689	17.5	4.625	118	4.750	121	4.875	124
2.750	70	3.750	95	4.062	102	3.626	92	7.008	178	1.102	28	2.039	51.8	1.220	31	0.689	17.5	5.125	130	5.250	134	5.375	137
2.875		3.875		4.187		3.740				1.102	28	2.039	51.8	1.220	31								
3.000		4.000		4.312	108	3.874	98.4			1.102	28	2.039	51.8	1.220	31								
3.125	80	4.250	109	4.562	115	4.016	102			1.102	28	2.039	51.8	1.220	31								
3.250		4.375		4.687		4.122				1.102	28	2.039	51.8	1.220	31								
3.375	85	4.500	114	4.812	122	4.311	109.5			1.102	28	2.039	51.8	1.220	31								
3.500	90	4.625	119	4.937	127	4.370	111			1.102	28	2.039	51.8	1.220	31								
3.625		4.750		5.062		4.496				1.102	28	2.039	51.8	1.220	31								
3.750	95	4.875	124	5.187	132	4.622	117.4			1.102	28	2.039	51.8	1.220	31								
3.875		5.000		5.312		4.874				1.102	28	2.039	51.8	1.220	31								

Velikosti nad průměr 70 mm jsou dodávány na dotaz

Rozsah použití

Teplota:	-40 °C ~ +230 °C
Tlak:	20 bar
Rychlost:	25 m/sec

Materiálové složení

Kovové části:	SS 316L / Ti2 / Hastelloy C
Stacionární plocha:	SC / SiC / TC / CA
Rotační plocha:	SC / SiC / TC
O-kroužky:	EPDM / Viton / FEP / Kalrez